

Alternative Data Sources Project update

January 2025

1. Feedback on yesterday's publications and GEKS-T video
2. Indicative impact of scanner data January 2019 to January 2024
3. How to refer to consumption segments moving forward



Feedback on yesterday's publications and GEKS-T explainer video

Impact analysis publications

We'd appreciate feedback from the Panel on yesterday's publications and GEKS-T video, and whether we need to plan any additional communications in the upcoming months.

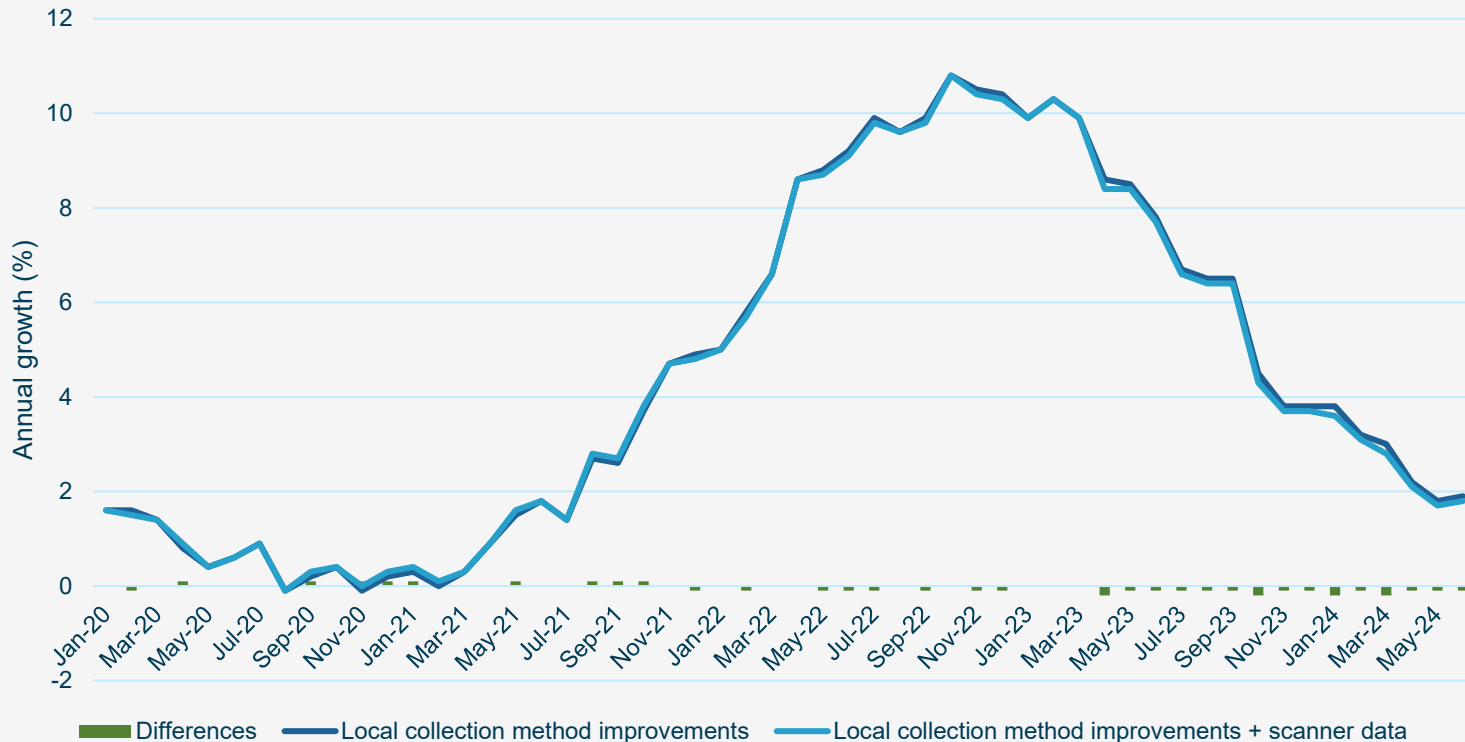
- [Blog: Futureproofing our headline inflation statistics](#)
- [Impact analysis on transformation of UK consumer price statistics, January 2025, and](#)
- [Redevelopment of Northern Ireland private rental statistics, impact analysis.](#)

- [How scanner data and GEKS-Tornqvist method are improving the way we track prices \(April 2025\) and further methods papers \(April 2025\).](#)
- [Scanner data impact analysis \(April 2025\)](#)

Indicative impact of scanner data January 2019 to January 2024

CPI including scanner data annual growth impacts

CPI annual growth rates

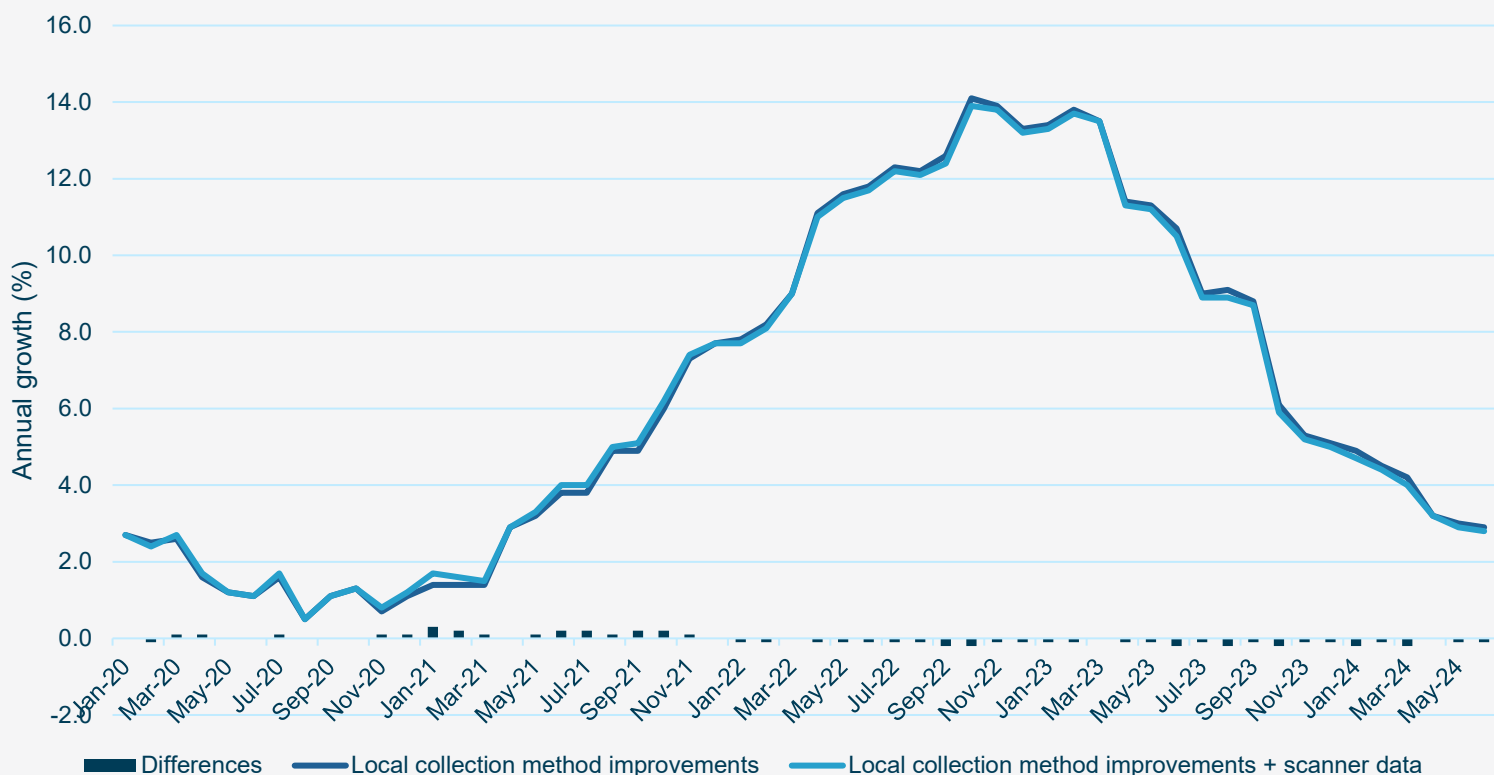


Year	Average annual growth differences
2020	0.0
2021	0.0
2022	-0.1
2023	-0.1
2024 (Jan to Jun)	-0.1

period	Local collection method improvements	Local collection method improvements + scanner data	Differences
Jan-20	1.6	1.6	0.0
Feb-20	1.6	1.5	-0.1
Mar-20	1.4	1.4	0.0
Apr-20	0.8	0.9	0.1
May-20	0.4	0.4	0.0
Jun-20	0.6	0.6	0.0
Jul-20	0.9	0.9	0.0
Aug-20	-0.1	-0.1	0.0
Sep-20	0.2	0.3	0.1
Oct-20	0.4	0.4	0.0
Nov-20	-0.1	0.0	0.1
Dec-20	0.2	0.3	0.1
Jan-21	0.3	0.4	0.1
Feb-21	0.0	0.1	0.1
Mar-21	0.3	0.3	0.0
Apr-21	0.9	0.9	0.0
May-21	1.5	1.6	0.1
Jun-21	1.8	1.8	0.0
Jul-21	1.4	1.4	0.0
Aug-21	2.7	2.8	0.1
Sep-21	2.6	2.7	0.1
Oct-21	3.7	3.8	0.1
Nov-21	4.7	4.7	0.0
Dec-21	4.9	4.8	-0.1
Jan-22	5.0	5.0	0.0
Feb-22	5.8	5.7	-0.1
Mar-22	6.6	6.6	0.0
Apr-22	8.6	8.6	0.0
May-22	8.8	8.7	-0.1
Jun-22	9.2	9.1	-0.1
Jul-22	9.9	9.8	-0.1
Aug-22	9.6	9.6	0.0
Sep-22	9.9	9.8	-0.1
Oct-22	10.8	10.8	0.0
Nov-22	10.5	10.4	-0.1
Dec-22	10.4	10.3	-0.1
Jan-23	9.9	9.9	0.0
Feb-23	10.3	10.3	0.0
Mar-23	9.9	9.9	0.0
Apr-23	8.6	8.4	-0.2
May-23	8.5	8.4	-0.1
Jun-23	7.8	7.7	-0.1
Jul-23	6.7	6.6	-0.1
Aug-23	6.5	6.4	-0.1
Sep-23	6.5	6.4	-0.1
Oct-23	4.5	4.3	-0.2
Nov-23	3.8	3.7	-0.1
Dec-23	3.8	3.7	-0.1
Jan-24	3.8	3.6	-0.2
Feb-24	3.2	3.1	-0.1
Mar-24	3.0	2.8	-0.2
Apr-24	2.2	2.1	-0.1
May-24	1.8	1.7	-0.1
Jun-24	1.9	1.8	-0.1

RPI including scanner data annual growth impacts

RPI annual growth rates

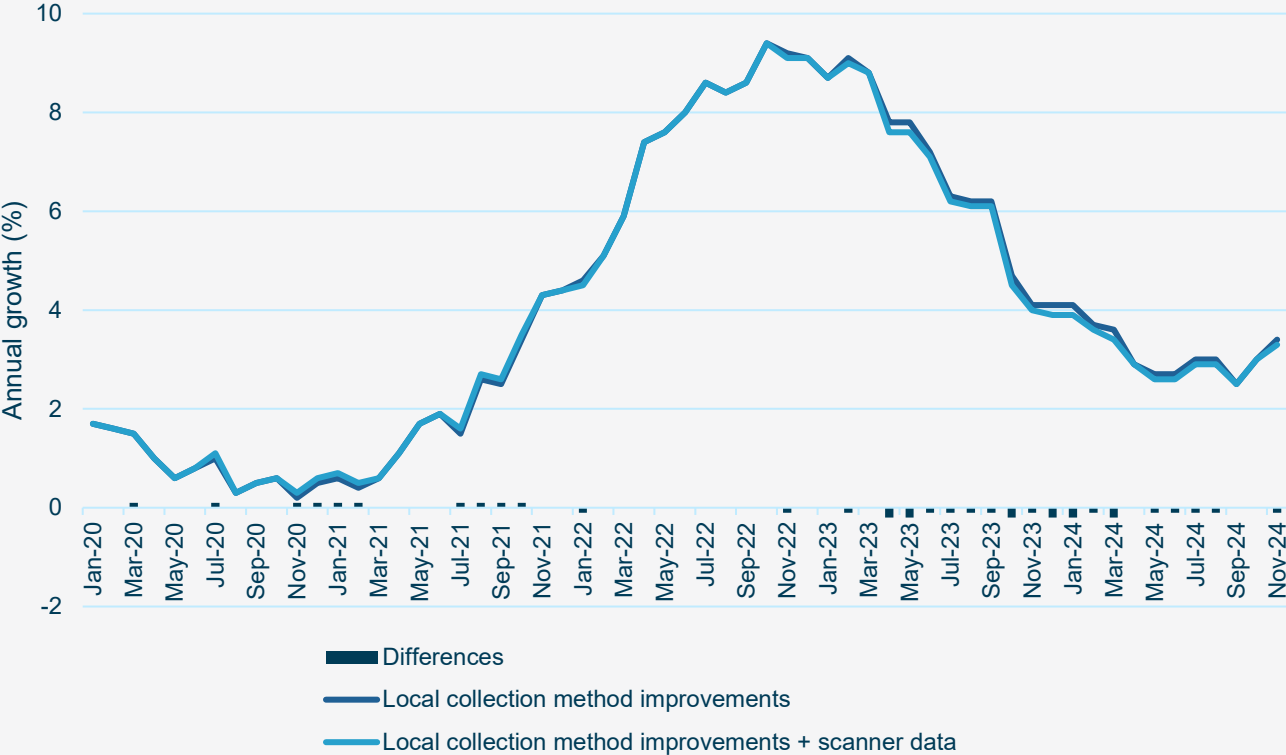


Year	Average annual growth differences
2020	0.0
2021	0.1
2022	-0.1
2023	-0.1
2024 (Jan to Jun)	-0.1

period	Local collection method improvements	Local collection method improvements + scanner data	Differences
Jan-20	2.7	2.7	0.0
Feb-20	2.5	2.4	-0.1
Mar-20	2.6	2.7	0.1
Apr-20	1.6	1.7	0.1
May-20	1.2	1.2	0.0
Jun-20	1.1	1.1	0.0
Jul-20	1.6	1.7	0.1
Aug-20	0.5	0.5	0.0
Sep-20	1.1	1.1	0.0
Oct-20	1.3	1.3	0.0
Nov-20	0.7	0.8	0.1
Dec-20	1.1	1.2	0.1
Jan-21	1.4	1.7	0.3
Feb-21	1.4	1.6	0.2
Mar-21	1.4	1.5	0.1
Apr-21	2.9	2.9	0.0
May-21	3.2	3.3	0.1
Jun-21	3.8	4.0	0.2
Jul-21	3.8	4.0	0.2
Aug-21	4.9	5.0	0.1
Sep-21	4.9	5.1	0.2
Oct-21	6	6.2	0.2
Nov-21	7.3	7.4	0.1
Dec-21	7.7	7.7	0.0
Jan-22	7.8	7.7	-0.1
Feb-22	8.2	8.1	-0.1
Mar-22	9	9.0	0.0
Apr-22	11.1	11.0	-0.1
May-22	11.6	11.5	-0.1
Jun-22	11.8	11.7	-0.1
Jul-22	12.3	12.2	-0.1
Aug-22	12.2	12.1	-0.1
Sep-22	12.6	12.4	-0.2
Oct-22	14.1	13.9	-0.2
Nov-22	13.9	13.8	-0.1
Dec-22	13.3	13.2	-0.1
Jan-23	13.4	13.3	-0.1
Feb-23	13.8	13.7	-0.1
Mar-23	13.5	13.5	0.0
Apr-23	11.4	11.3	-0.1
May-23	11.3	11.2	-0.1
Jun-23	10.7	10.5	-0.2
Jul-23	9	8.9	-0.1
Aug-23	9.1	8.9	-0.2
Sep-23	8.8	8.7	-0.1
Oct-23	6.1	5.9	-0.2
Nov-23	5.3	5.2	-0.1
Dec-23	5.1	5.0	-0.1
Jan-24	4.9	4.7	-0.2
Feb-24	4.5	4.4	-0.1
Mar-24	4.2	4.0	-0.2
Apr-24	3.2	3.2	0.0
May-24	3	2.9	-0.1
Jun-24	2.9	2.8	-0.1

CPIH including scanner data annual growth impacts

CPIH annual growth rates

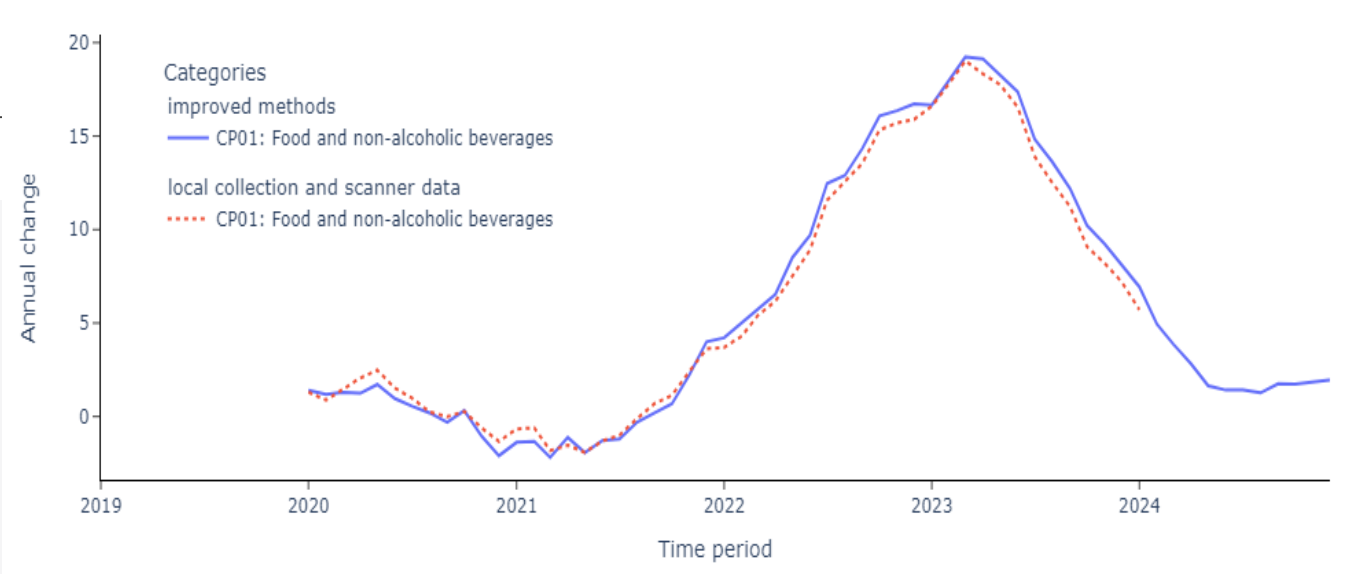
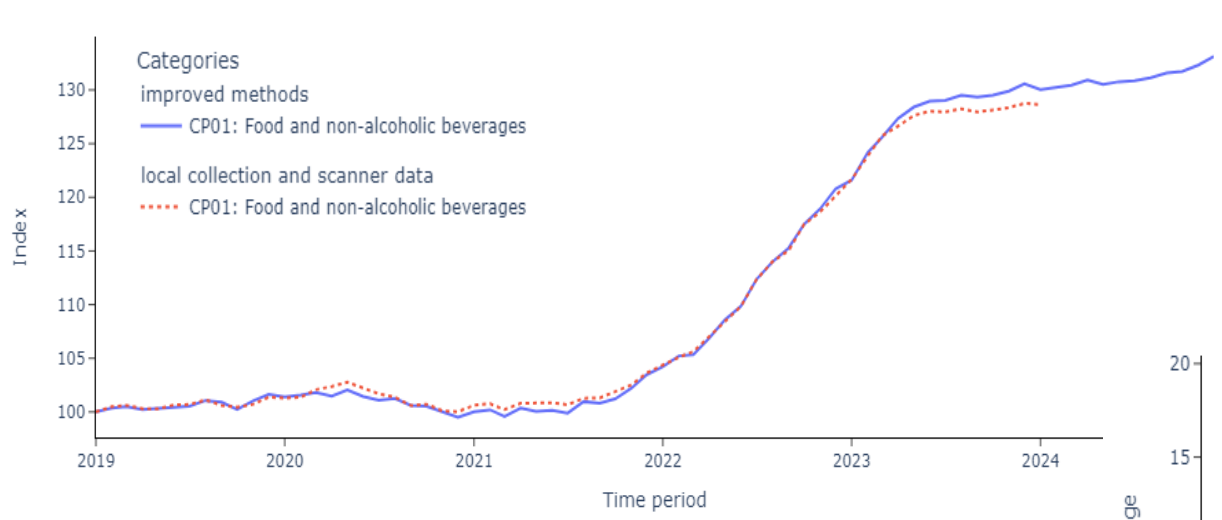


Year	Average annual growth differences
2020	0.0
2021	0.1
2022	0.0
2023	-0.1
2024 (Jan to Jun)	-0.1

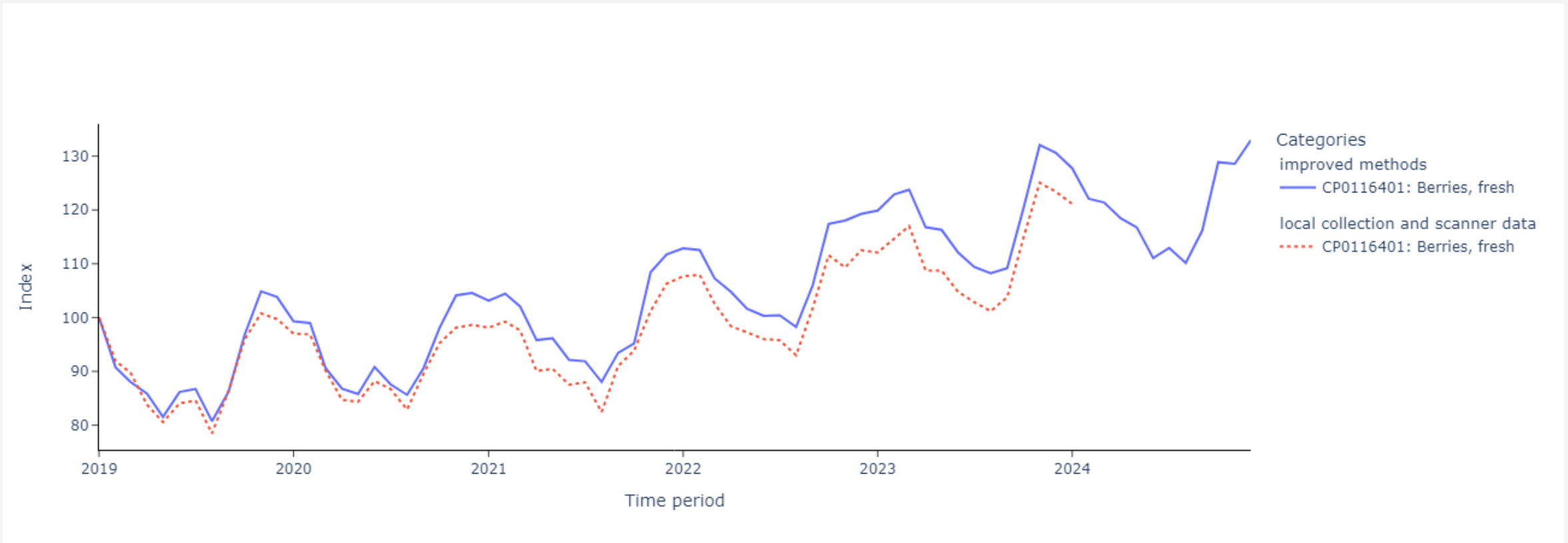
period	Local collection method improvements	Local collection method improvements + scanner data	Differences
Jan-20	1.7	1.7	0
Feb-20	1.6	1.6	0
Mar-20	1.5	1.5	0.1
Apr-20	1	1	0
May-20	0.6	0.6	0
Jun-20	0.8	0.8	0
Jul-20	1	1.1	0.1
Aug-20	0.3	0.3	0
Sep-20	0.5	0.5	0
Oct-20	0.6	0.6	0
Nov-20	0.2	0.3	0.1
Dec-20	0.5	0.6	0.1
Jan-21	0.6	0.7	0.1
Feb-21	0.4	0.5	0.1
Mar-21	0.6	0.6	0
Apr-21	1.1	1.1	0
May-21	1.7	1.7	0
Jun-21	1.9	1.9	0
Jul-21	1.5	1.6	0.1
Aug-21	2.6	2.7	0.1
Sep-21	2.5	2.6	0.1
Oct-21	3.4	3.5	0.1
Nov-21	4.3	4.3	0
Dec-21	4.4	4.4	0
Jan-22	4.6	4.5	-0.1
Feb-22	5.1	5.1	0
Mar-22	5.9	5.9	0
Apr-22	7.4	7.4	0
May-22	7.6	7.6	0
Jun-22	8	8	0
Jul-22	8.6	8.6	0
Aug-22	8.4	8.4	0
Sep-22	8.6	8.6	0
Oct-22	9.4	9.4	0
Nov-22	9.2	9.1	-0.1
Dec-22	9.1	9.1	0
Jan-23	8.7	8.7	0
Feb-23	9.1	9	-0.1
Mar-23	8.8	8.8	0
Apr-23	7.8	7.6	-0.2
May-23	7.8	7.6	-0.2
Jun-23	7.2	7.1	-0.1
Jul-23	6.3	6.2	-0.1
Aug-23	6.2	6.1	-0.1
Sep-23	6.2	6.1	-0.1
Oct-23	4.7	4.5	-0.2
Nov-23	4.1	4	-0.1
Dec-23	4.1	3.9	-0.2
Jan-24	4.1	3.9	-0.2
Feb-24	3.7	3.6	-0.1
Mar-24	3.6	3.4	-0.2
Apr-24	2.9	2.9	0
May-24	2.7	2.6	-0.1
Jun-24	2.7	2.6	-0.1

Food and non-alcoholic beverages

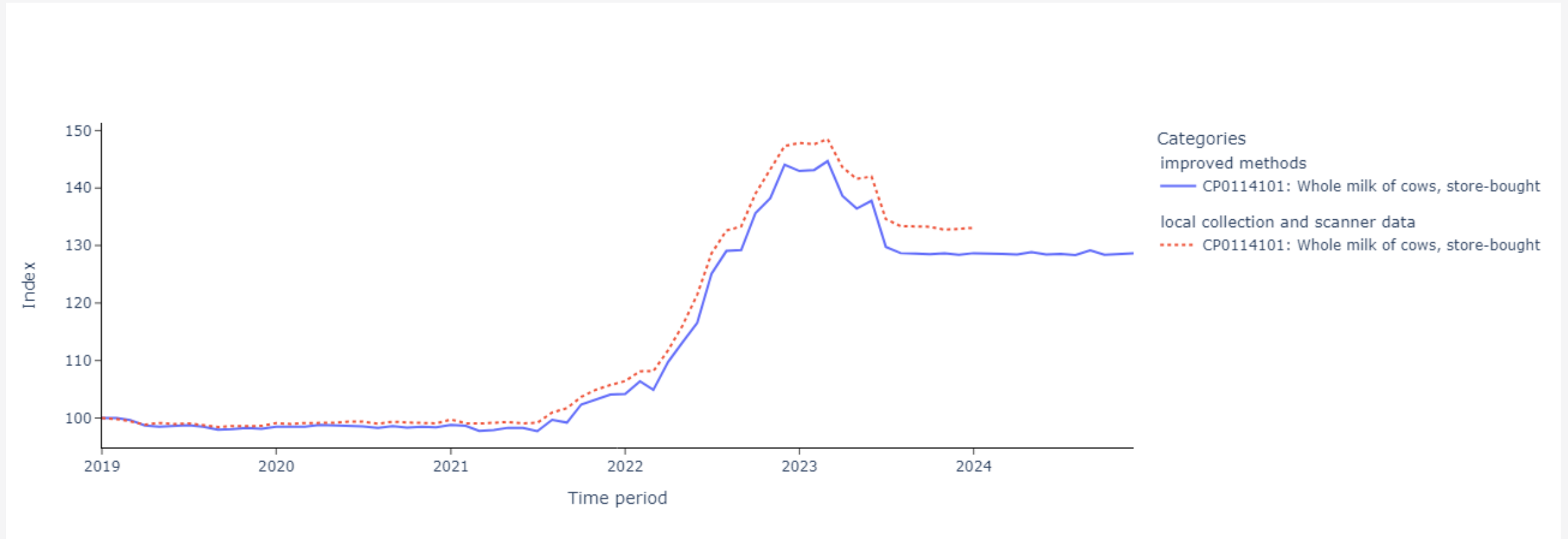
Year	Average annual growth differences
2020	0.3
2021	0.2
2022	-0.7
2023	-0.7
2024 (Jan to Nov)	-0.5



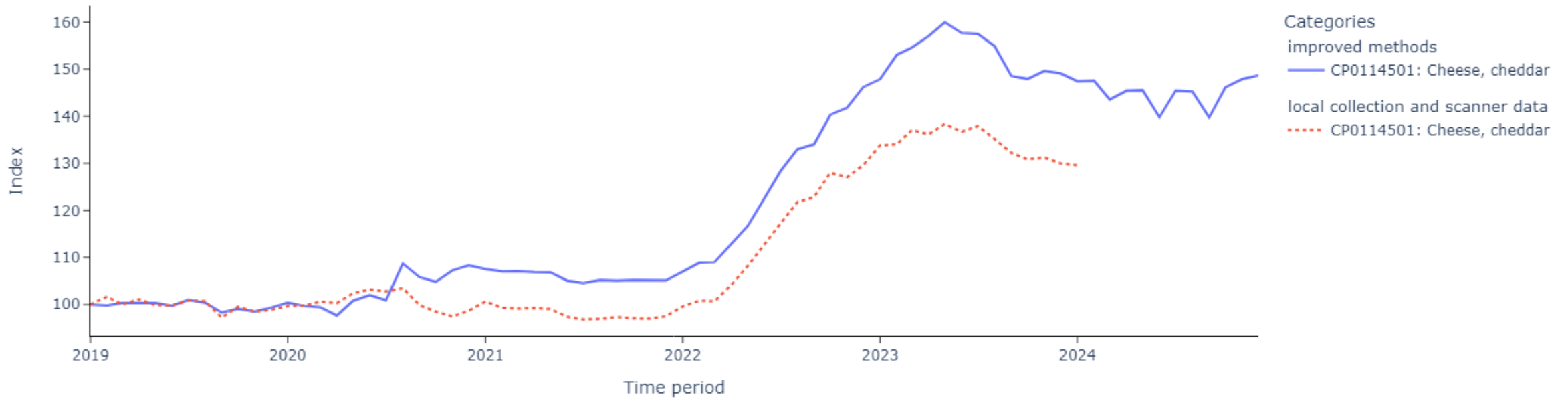
CP0116401 - Berries, fresh



CP0114101 - Whole milk of cows, store-bought



CP0114501 - Cheese, cheddar



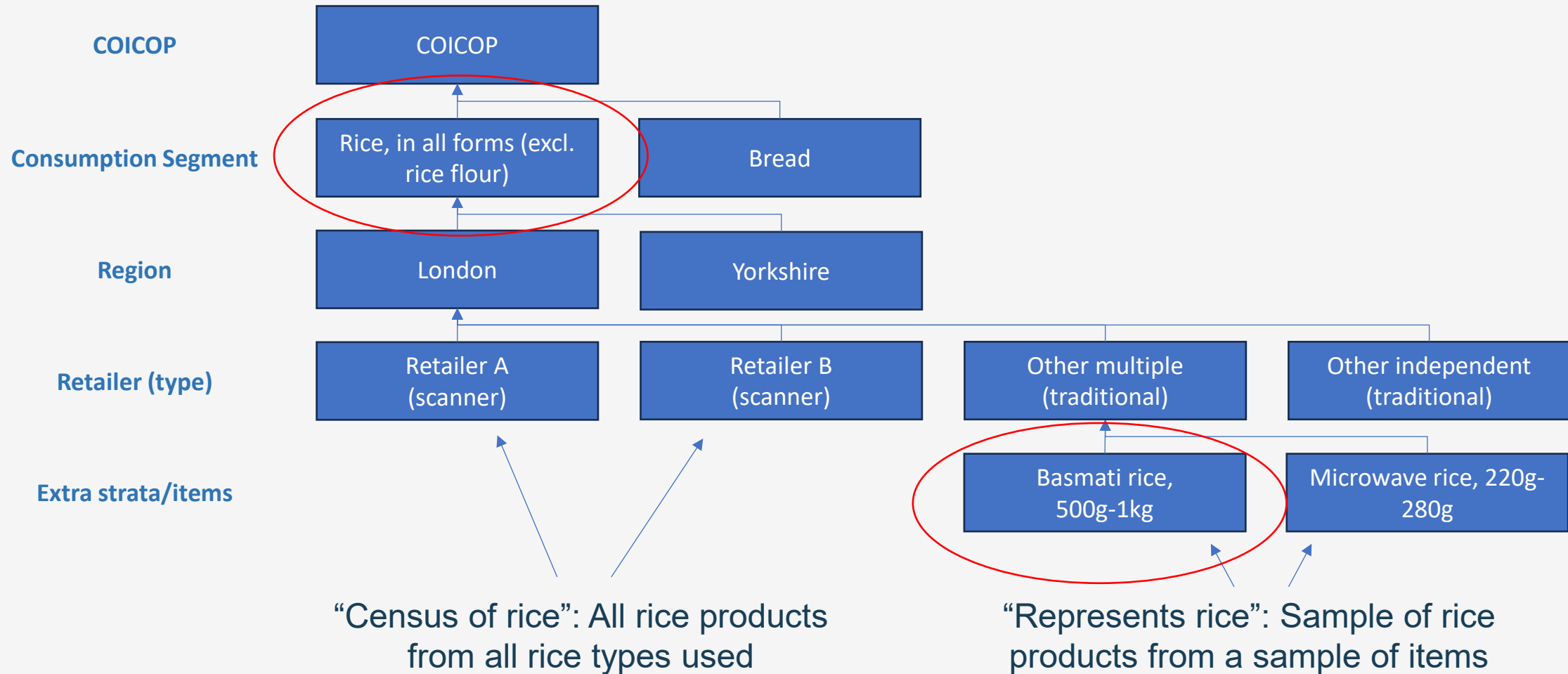
Consumer prices impact analysis (April 2025)

We'd like to publish impact analysis in April to showcase the project's progress. We'd value the panel's feedback on the scope of the impact analysis including:

- 1.Length of the time series
- 2.Which indices to publish (CPIH, CPI, or RPI)
- 3.Level of detail (division, group etc)

Consumption segments

Case study: Groceries



Consumption segments

We'd welcome the panel's suggestions on how we could refer to 'consumption segments' in regular bulletins and briefings in future:

Option	Pros and cons
"Item"	No longer strictly correct for groceries, but remains correct for the rest of the basket and is well understood by users
"Consumption segments"	Strictly correct, but terminology not widely understood
"Item grouping"	More accessible, but "group" is also a level in the COICOP consumption hierarchy
"Item segments"	Strictly correct, but terminology not widely understood
"Consumption groups"	Not widely understood, and "group" is a level in the COICOP hierarchy