

Advisory Panel on Consumer Prices – Stakeholder & Technical

Impact analysis drop-in session

15 January 2026

Session aims

- Summarise:
 - 2026 improvements
 - Readiness assessment
 - Presentation of updated analysis
- Opportunity for the Panel to review and discuss updated impact analysis.
- Panel steer on how best to land all the different products and changes with different users.

2026 Improvements

- We are making data and methods improvements in CPI/CPIH/RPI for:
 - Introduction of grocery scanner data
 - Incorporation of the improved measurement of the UK House Price Index
 - Changes to price collection for one-night hotel stays and computer games
- These improvements will be introduced into our consumer price statistics from February 2026 data (published in March 2026).
- These improvements have passed through the RPI Protocol and the outcome of that assessment will be published in January 2026.
- This presentation contains market sensitive statistics until publication on 28 January 2026.

Groceries scanner data: Readiness assessment

Leanne James

Office for National Statistics

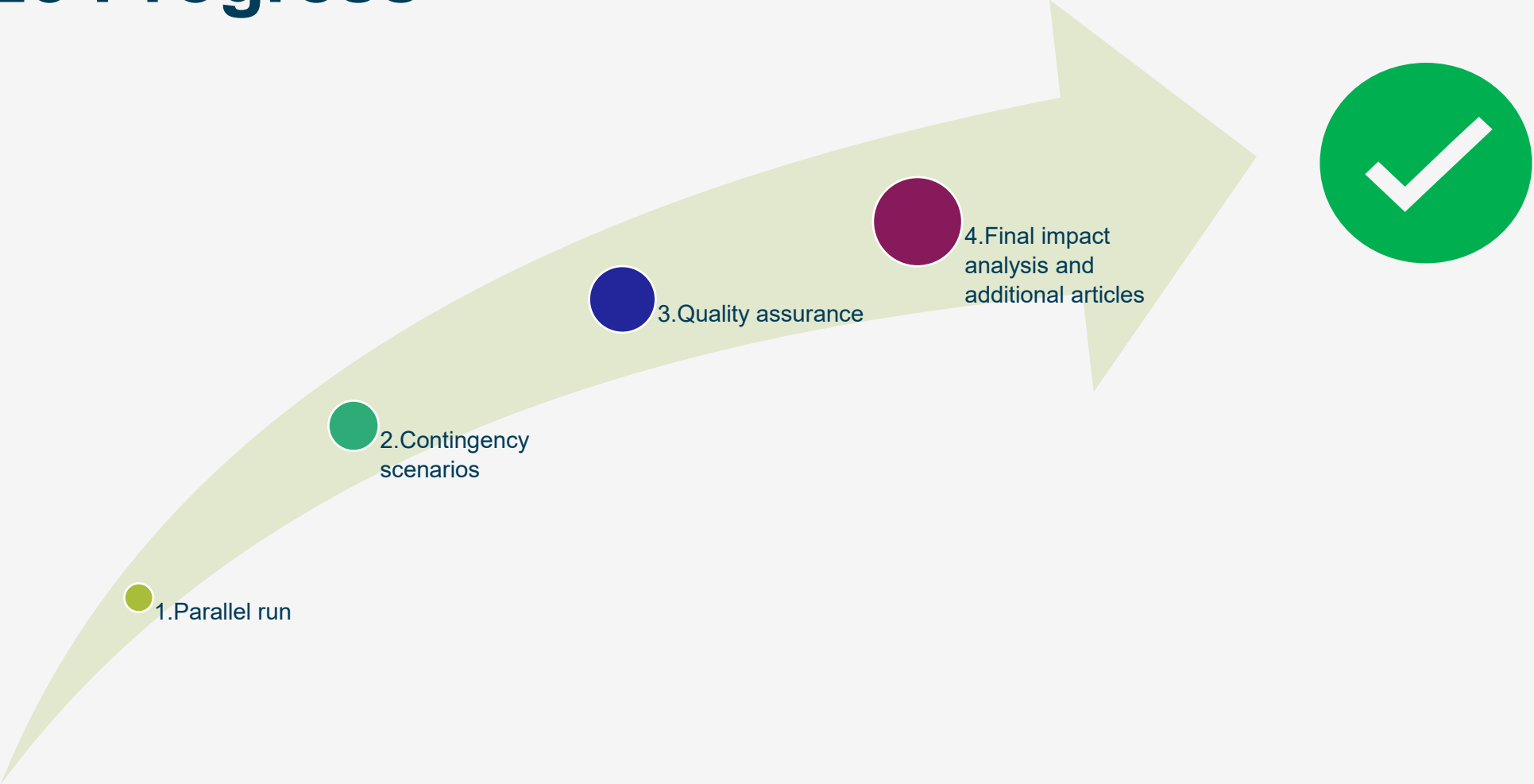
15 January 2026



Readiness Assessment: Go Live Acceptance Criteria

REDACTED

2025 Progress



Groceries scanner data: updated analysis

Aimee North

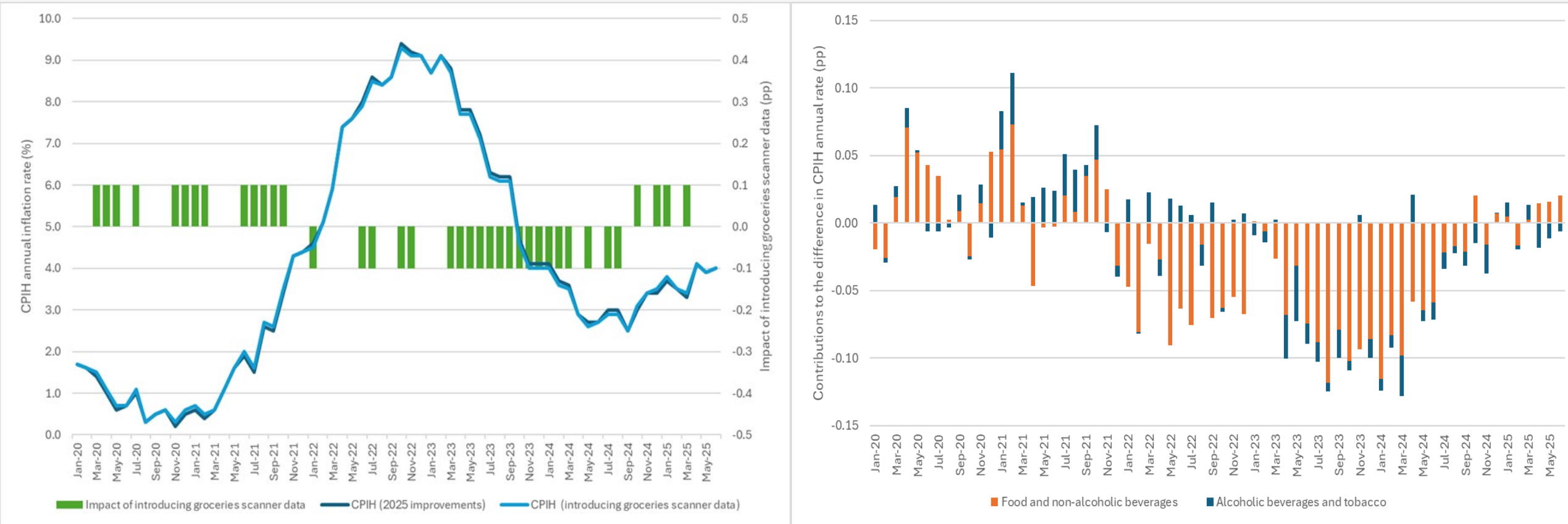
Office for National Statistics

15 January 2026



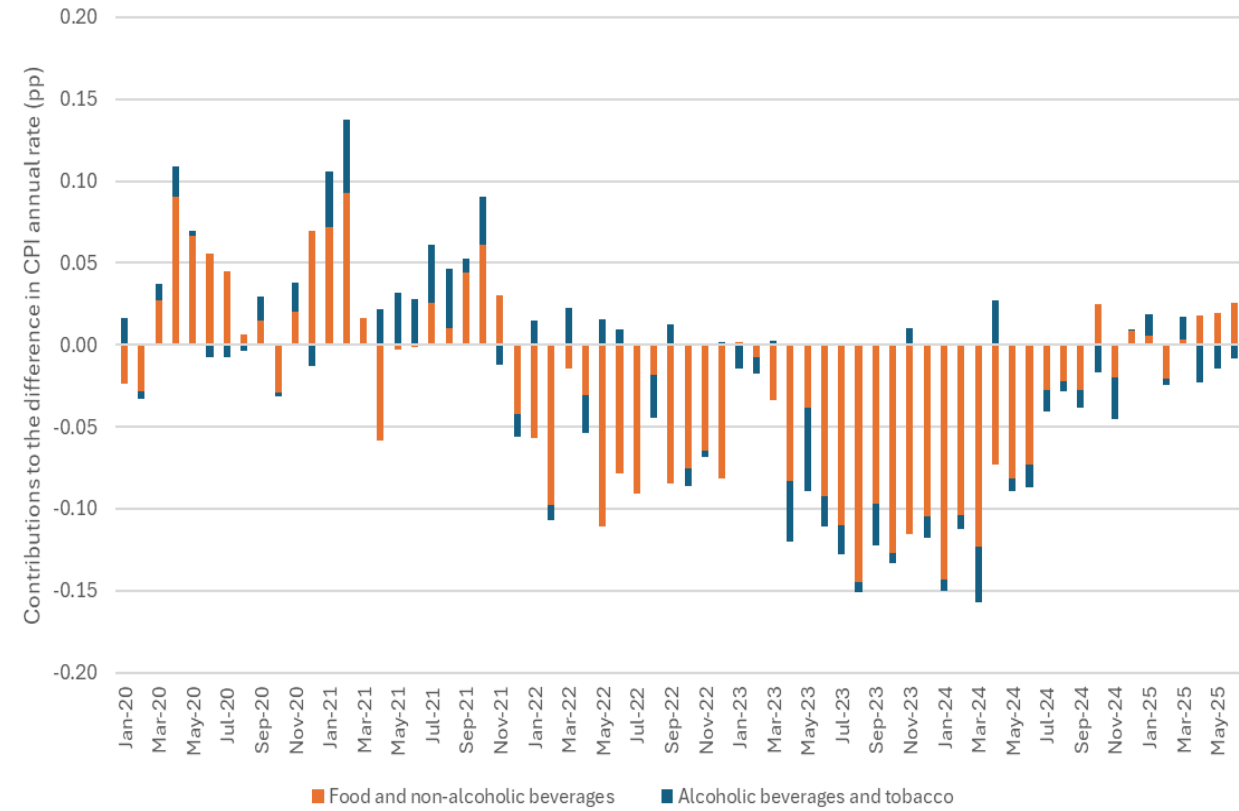
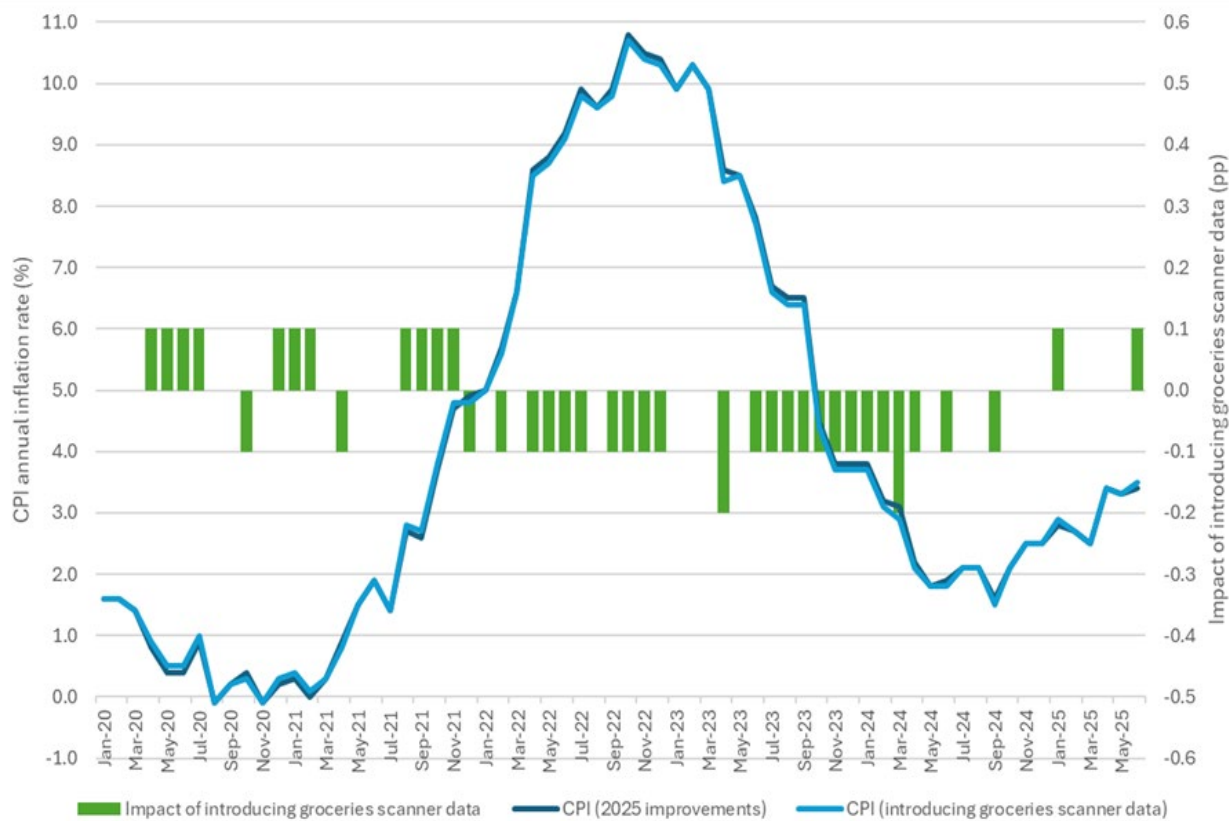
Headline CPIH

CPIH annual inflation rate was 0.02pp lower on average when groceries scanner data was included.



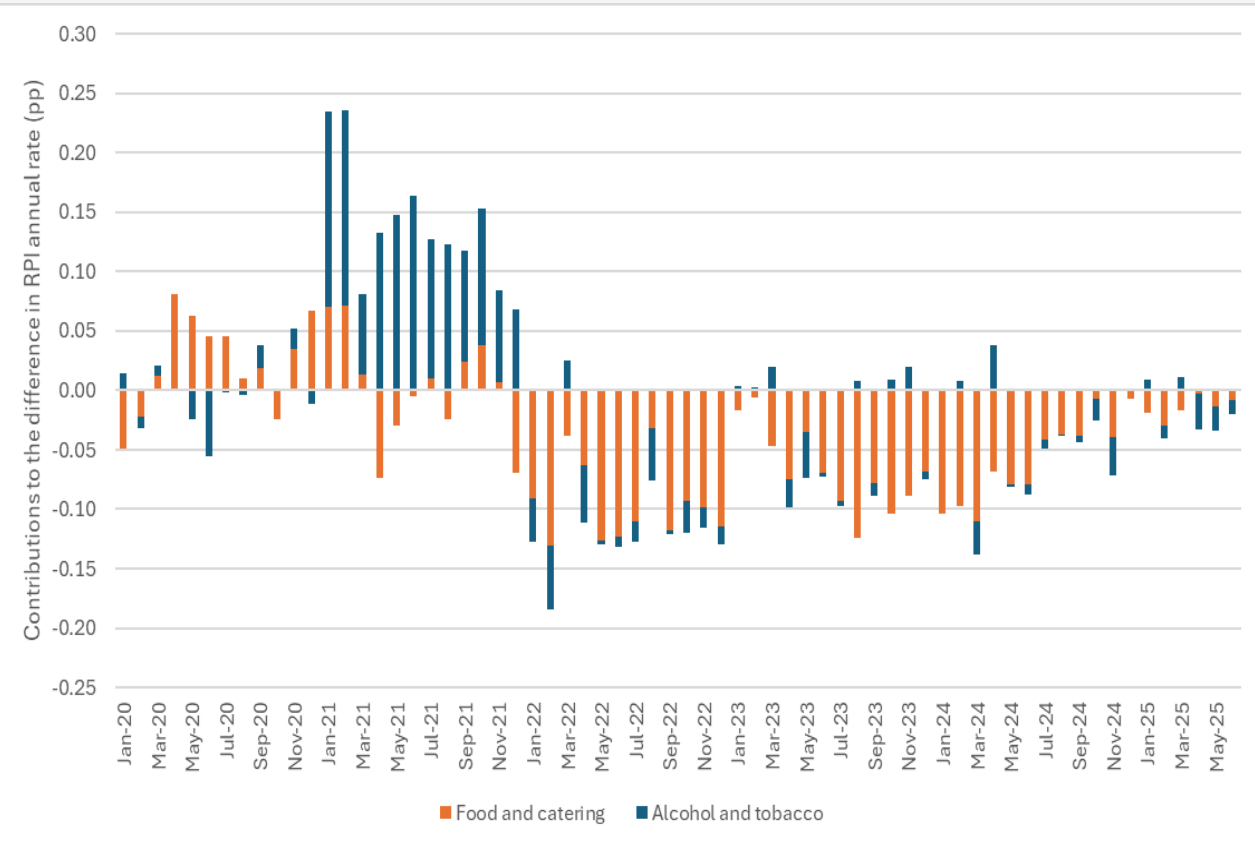
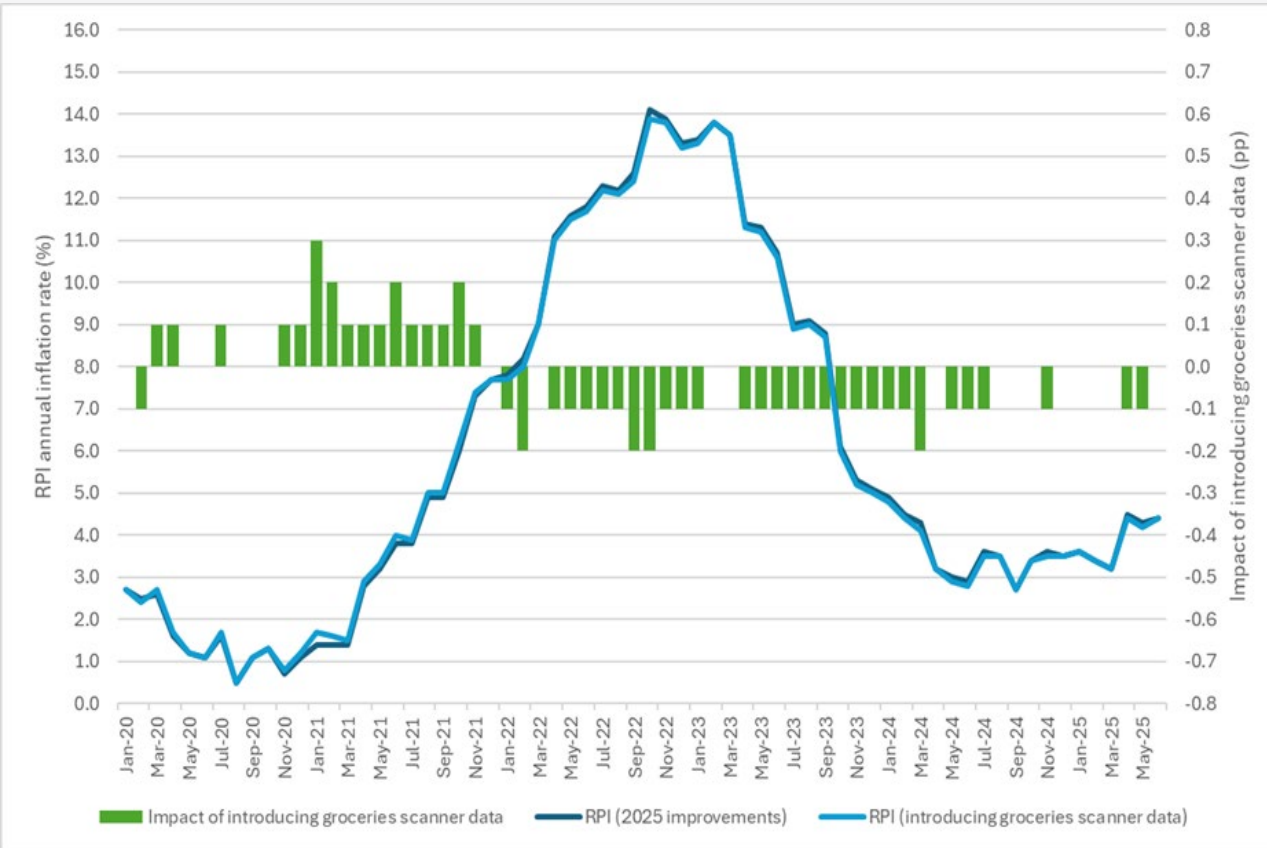
Headline CPI

CPI annual inflation rate was 0.03pp lower on average when groceries scanner data was included.

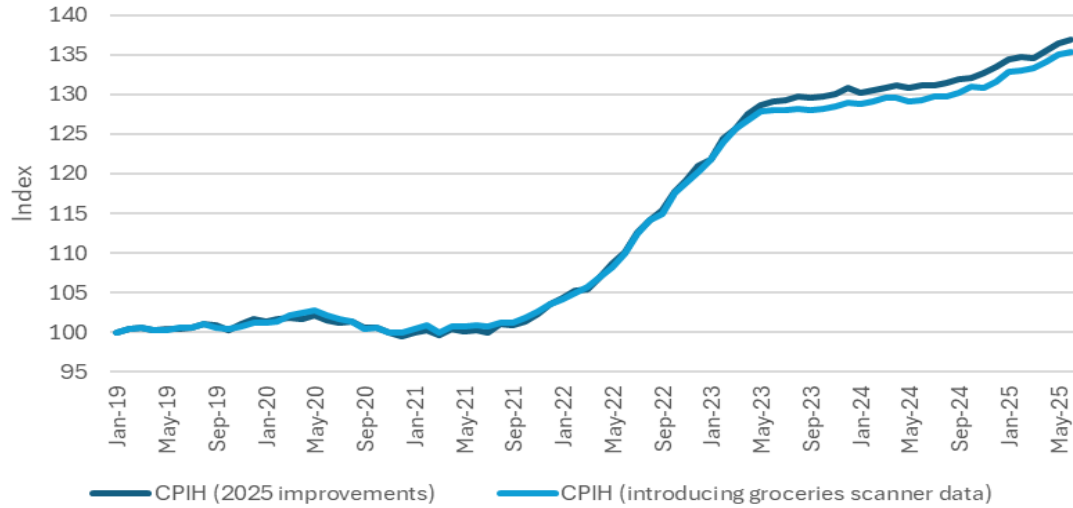


Headline RPI

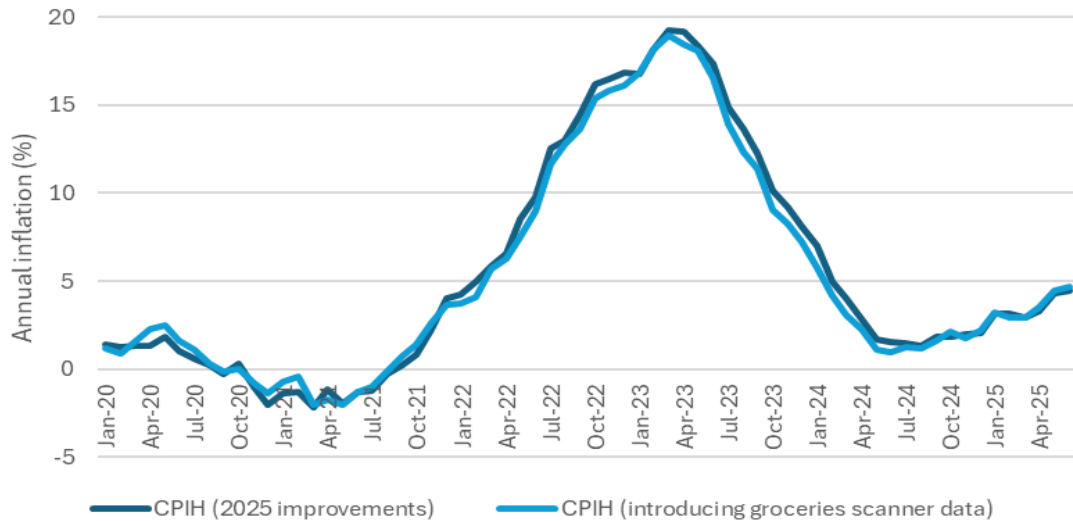
RPI annual inflation rate was 0.02pp lower on average when groceries scanner data was included.



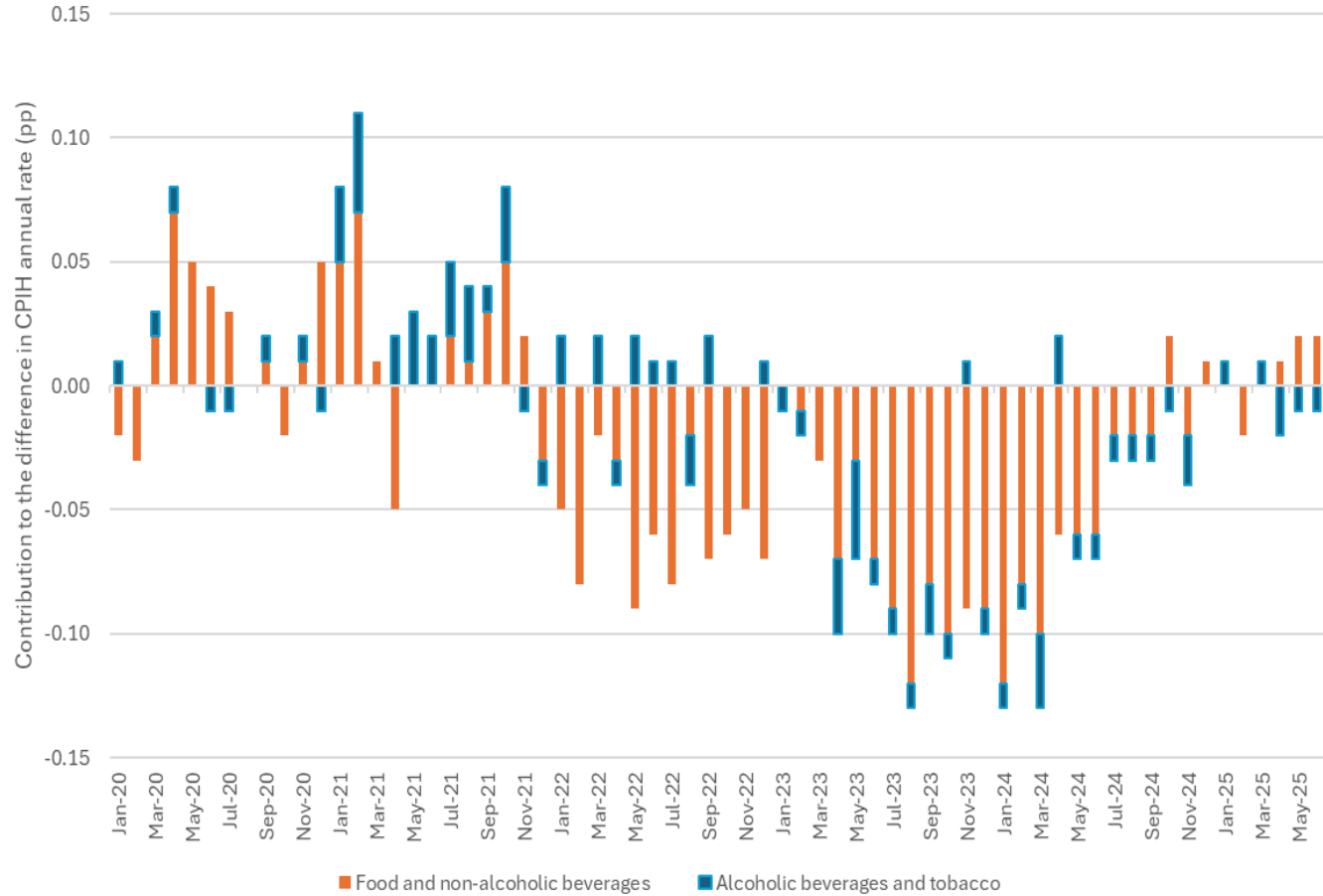
CPIH Index: Food & non-alcoholic beverages



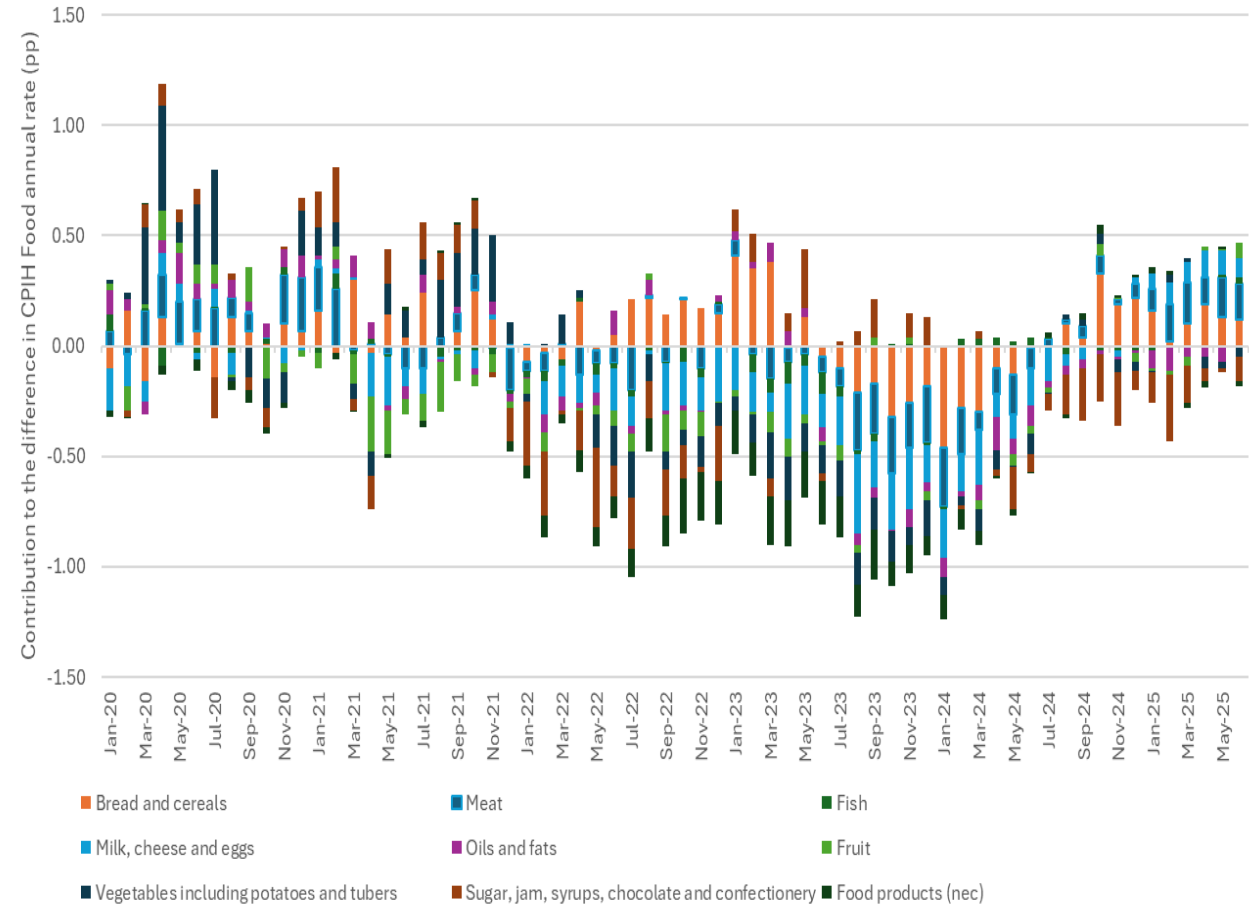
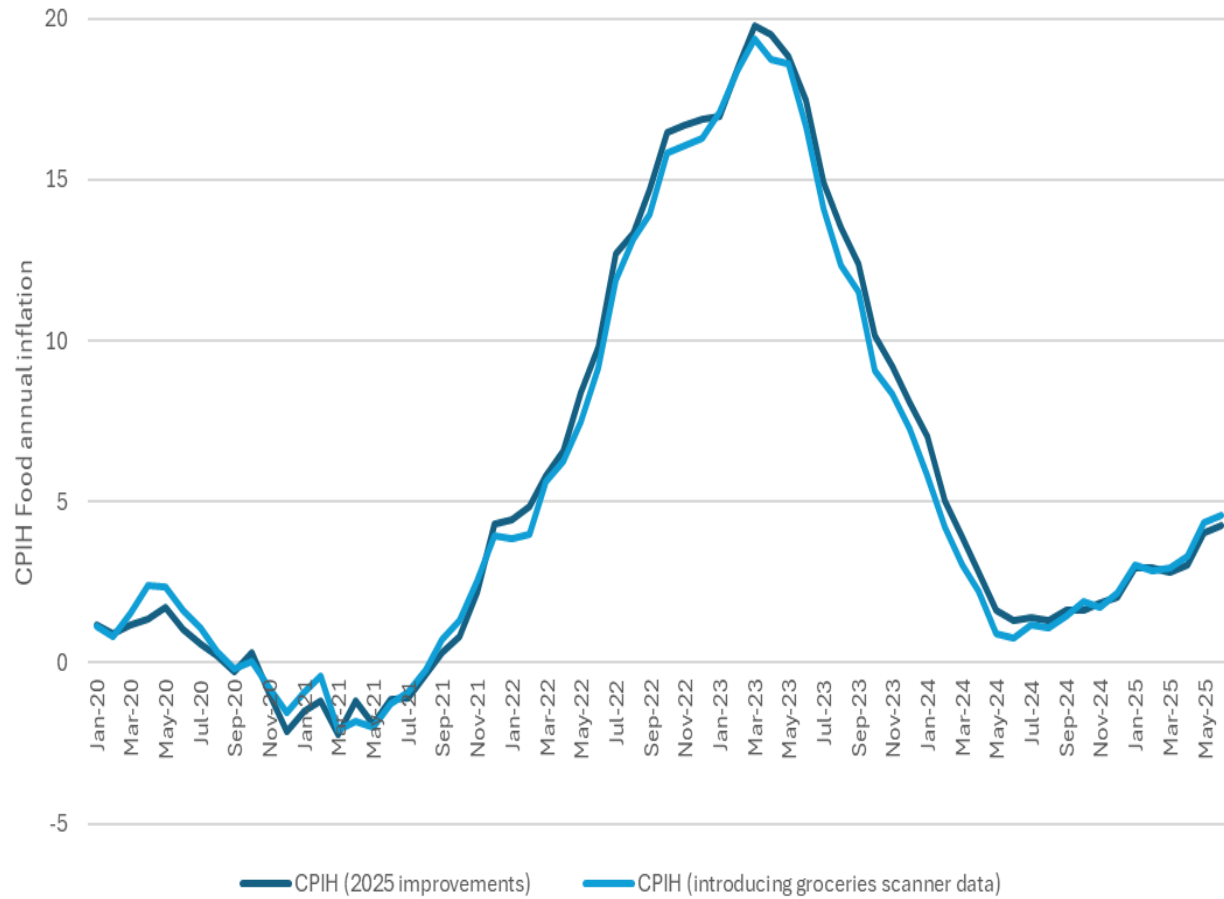
CPIH Annual inflation: Food & non-alcoholic beverages



CPIH: Food & non-alcoholic beverages



CPIH: Food



Next steps

28 January	29 January	15 March	25 March
Impact analysis	Webinar on introducing scanner data into CPI	Update to the basket of goods and services	Scanner data introduced into live production (Feb index)
Plans for the microdata		Updates to the weights	Updated Technical Manual
Accessible explanation of the methodology			
Commonly asked questions			
Correspondence on RPI changes			
Scanner data blog			

Improved measure of the UK House Price Index

Aimee North

Office for National Statistics

15 January 2026



Background

- In August 2025, an improvement was made to the measurement of the UK House Price Index (HPI), specifically to the monthly imputation methodology.
- This improvement addressed an identified over-estimation bias affecting early provisional HPI inflation estimates for new builds in the previous methodology.
- Provisional UK HPI estimates for new build inflation are on average lower under the improved method than under the previous method.
- This improvement was backed-dated to January 2025, using UK HPI's 12-month revision period.
- Further information about the UK HPI improvement is available in HM Land Registry's [About the UK HPI guidance](#).
- This UK HPI improvement followed engagement with the APCP Technical Panel in January 2025 and April 2025, and with the APCP Stakeholder Panel in July 2025.
- Consumer price inflation statistics have continued using the old UK HPI measure, and will use the improved measure from February 2026 (published in March 2026).

Impact on consumer price inflation statistics

- The UK HPI data are used in the CPI and CPIH for surveyors' fees only, and within five items in the RPI.
- The surveyors' fees item has a weight of less than 0.2% in 2025 in both CPI and CPIH.
- The five items have a total weight of around 12% in RPI.
- UK HPI data using the improved method is only available from January 2025, affecting February 2025 indices onwards.
- Indicative impact analysis (Feb-25 to Sep-25) estimated the impact of the UK HPI changes on the annual inflation rate for RPI is to reduce the RPI annual inflation rate by 0.1 percentage points on average, with some variation month to month (0.0 to -0.2pp).

Changes to price collection

Phil Gooding

Office for National Statistics

15 January 2026



Overnight hotel accommodation

- One-night hotel prices are collected the day before index day for a stay on index night.
- Advance one-night prices are collected six weeks in advance of index day.
- The latter item was introduced in 2025 to reduce the volatility caused by the traditional collection timing which resulted in reduced sample sizes due to rooms being unavailable for that same night.
- We will:
 - collect advance one-night hotel prices for a second date each month, so doubling the sample size for the item
 - remove the traditional one-night price item from the February index published in March 2026 to manage collection costs.
- Overall, this should reduce month to month volatility in the hotels index and aid interpretation of the data.

Computer games

- Computer games and computer game downloads indices are chart collections – the prices collected are for specific positions in best seller charts as opposed to specific games.
- Aim is to avoid any bias in the indices but it can introduce short-term volatility resulting from changes in chart composition.
- A pilot study tested three alternative collection frequencies, all producing less volatile indices than the current approach.
- In future, we will collect prices twice a month for both computer games purchased over the internet and computer game downloads. The new collection will first impact the February index released in March.

Any questions?

Panel steer on how best to land all the different products and changes with different users.

Opportunity for the Panel to review and discuss updated impact analysis.

Office for National Statistics

15 January 2026

